

International Exhibition for Rehabilitation Equipment
and Russian Forum on Prosthetics and Orthotics

AO EXPOCENTRE FAIRGROUNDS AT
KRASNAYA PRESNYA, MOSCOW, RUSSIA

JUNE 2021



www.integration.ru

Member of  MEDICAlliance

General information

Established
2011

Organiser
000 Messe Düsseldorf Moscow
Leipziger Messe International
GmbH

Venue
AO EXPOCENTRE
Fairgrounds at Krasnaya
Presnya, Moscow, Russia

Project management
Mikhail Shatov

Contact
Mikhail Shatov
ShatovM@messe-duesseldorf.ru
Phone: +7 495 955 91 99 ext. 634

Staging cycle
Biennial

Visitor target groups

- Science community
- Businessmen
- Dealers
- Federal and regional state authorities
- Mass media
- Medical experts
- Non-commercial organisations
- People with disabilities, patients
- Physiotherapists
- Decision-makers, buyers and managers from hospitals, clinics and rehabilitation centers, private and public orthopaedic workshops, public agencies, insurers and medical appraisal services
- State institutions and enterprises
- Disability assessors

Main product categories

- Accessible social, transport and engineering infrastructure
- Associations, public organisations, media
- Communication
- Daily living aids, household, nutrition and clothing
- Education, professional training, occupation and employment
- Health resorts and rehabilitation centres
- Medical care
- Mobility and walking aids
- Nursing care for in-patient, homecare for disabled and elderly
- Orthopaedic aids
- Orthopaedic shoe technology
- Physical training, physiotherapy and occupational therapy
- Technical means and technologies for rehabilitation
- Travel, leisure, sports and recreation

Statistics 2019

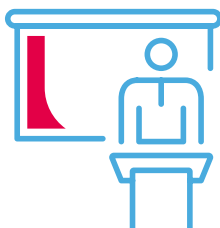
Total exhibitors

116

Domestic 88

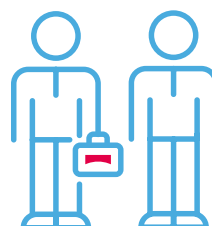
Foreign 28

Countries 9



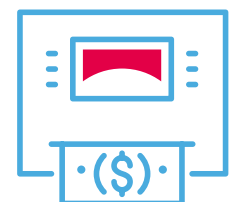
Total visitors

3,090



Total net exhibition area (m²)

2,044



When reading the figures for the different years, please note that all MEDICAlliance events firstly take place in different rotations and secondly have been partially replaced by digital formats due to the COVID-19 pandemic.

Economic data for Russia

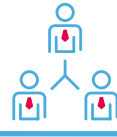
Future prospects for "Medical Technology"

The virus pandemic is pushing the Russian healthcare system to its limits. The government is responding by building makeshift hospitals in no time at all, increasing funding for bed capacity in existing hospitals and medical technology. Around 412 million euros alone are being spent on expanding the number of beds in hospitals and infection wards, and a further 162 million euros are available to purchase medical technology. The focus here is on respiration equipment, Covid-19 rapid tests and protective suits. The government is temporarily facilitating the import of medical products from abroad to ensure provision for the population.

Further information: www.medprom.ru

Number of inhabitants (million) in 2019

146.7



Proportion of health expenditure to GDP (%) in 2018

3.2



Population increase (% p.a.) in 2018

-0.1



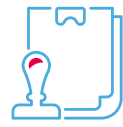
Doctors/100,000 inhabitants in 2019

374



Average life expectancy at birth (years) in 2018

72.6



Hospital beds/100,000 inhabitants in 2019

860



Market data for "Medical Technology"

4,220

Market volume in US\$ millions (2018)

3,352

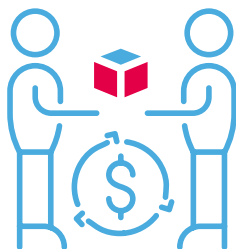
Import in US\$ millions (2018)

Key economic data 2018 to 2020* as per December 2019

Real change in % in comparison with previous year | *2019 and 2020: Forecast

GDP

2020 2.0
2019 1.3
2018 2.3



Gross capital investment

2020 7.0
2019 3.1
2018 4.3



Export (only goods)

2020 6.2
2019 3.6
2018 5.1



Source: GTAI Special Coronavirus Russland, Mai 2020



MEDICAlliance
www.medicalalliance.global

Messe Düsseldorf GmbH
Postfach 10 10 06 _ 40001 Düsseldorf _ Germany
Tel. +49 211 4560-01 _ Fax +49 211 4560-668

www.messe-duesseldorf.de



**Messe
Düsseldorf**