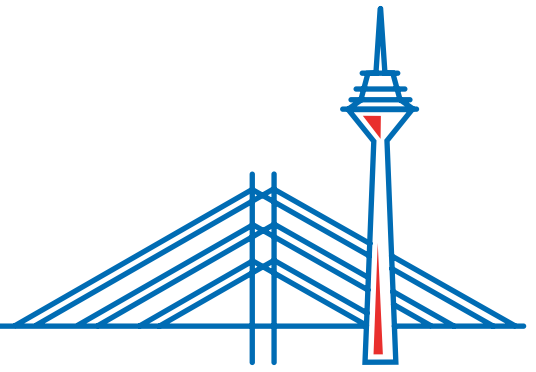




Leading International Trade Fair

DÜSSELDORF, GERMANY
17-20 NOVEMBER 2025



www.medica.de

Member of  MEDICAlliance

General information

Established
1969

Organiser
Messe Düsseldorf GmbH

Venue
Exhibition Centre and Congress
Center Düsseldorf, Germany

Staging cycle
Annual

Project management
Christian Bigge
Claudio Bucchi
Sebastian Helwig
Udo Wiemann

Contact
Udo Wiemann
WiemannU@messe-duesseldorf.de
Phone: +49 211 4560 7756

Co-located exhibition
COMPAMED

Visitor target groups

- General practitioners
- Hospital doctors
- Hospital managers
- Hospital nursing staff
- Hospital technical managers
- Laboratory managers
- Physiotherapists
- Medical trade
- Medical industry
- Medical assistants (hospital, doctor's surgery, laboratory)
- Hospital operators

Main product categories

Imaging and diagnostics/
medical equipment and
devices

Laboratory equipment

Diagnostic tests

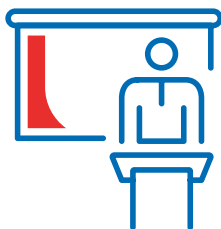
Physiotherapy/
orthopaedic technology

Disposables and
consumables

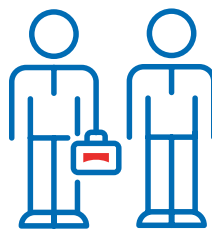
IT systems and IT solutions

Statistics MEDICA & COMPAMED 2024

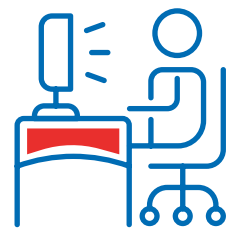
A total of
5,800
Exhibitors from
72 countries



Around
80,000
Visitors from
165 countries



Around
100,000
Unique users during
the show days



Economic data for Germany

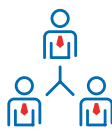
Future prospects for "Medical Technology"

Despite Corona, the companies generated around 34 billion in total sales in 2021, around 3 percent higher than in 2019. Medical technology remains a growing cornerstone of the German economy, but expectations are subdued and sales growth is expected to be lower in 2022. The industry has a positive outlook for the future due to demographic trends, particularly in mature economies, and high levels of healthcare investment in many emerging markets. The market is also being driven by the increasing importance of "health" as a commodity and by new and further technological developments. However, the German medical technology industry's participation in the growth potential will increasingly depend on the European legal framework and a positive investment climate.

Further information:
www.spectaris.de, www.gtai.de

Number of inhabitants (million) in 2021

83.3



Proportion of health expenditure to GDP (%) in 2020

13.1



Population increase (% p.a.) in 2021

0.1



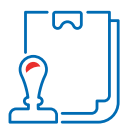
Doctors/100,000 inhabitants in 2021

450



Average life expectancy at birth (years) in 2018

80.9



Hospital beds/100,000 inhabitants in 2019

791



Market data for "Medical Technology"

34,25

Market volume in € millions (2020)

21,8

Export in € millions (2021)

+ 2,7%

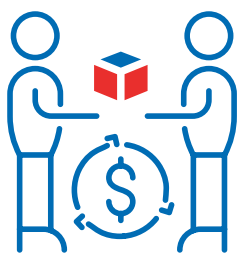
Forecast (2022)

Key economic data 2019 to 2021 as per November 2021

Real change in % in comparison with previous year

GDP

2022 4.6
2021 2.7
2020 -4.6



Gross capital investment

2021 6.5
2020 0.9
2019 4.7



Export (only goods)

2021 15.9
2020 -9.7
2019 15.9



Source: Destatis, Statistisches Bundesamt



MEDICAlliance
www.medicalliance.global

Messe Düsseldorf GmbH
P.O. Box 1010 06
40001 Düsseldorf, Germany
Tel. +49 211 4560-01
Fax +49 211 4560-668
www.messe-duesseldorf.de

M
Messe
Düsseldorf