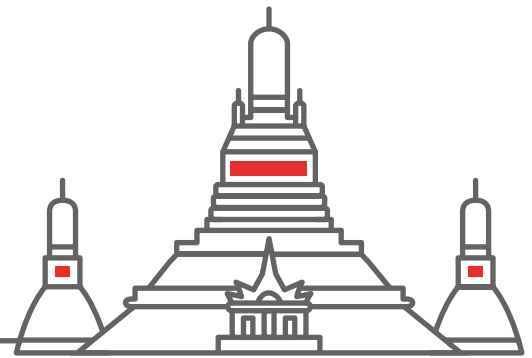




10th International Exhibition on Hospital,
Diagnostic, Pharmaceutical, Medical &
Rehabilitation Equipment & Supplies
BITEC, BANGKOK, THAILAND
13-15 SEPTEMBER 2023



www.medicalfair-thailand.com

Member of  **MEDICAlliance**

General information

Established
2003

Organiser
Messe Düsseldorf Asia Pte. Ltd.

Venue
Bangkok International Trade
and Exhibition Centre
Bangkok, Thailand

Staging cycle
Biennial

Project management
Daphne Yeo

Contact
Daphne Yeo
medicalfair-thailand@mda.com.sg
Phone: +65 6332 9620
Christian Bigge
BiggeC@messe-duesseldorf.de
Phone: +49 211 4560 573

Visitor target groups

- Health ministry officials
- Hospital managers and employees
- Doctors (surgeries and hospital)
- Nursing officers
- Hospital technicians
- Biologists, biochemists, technicians
- Dispensing chemists, pharmacists
- Physiotherapists
- Rehabilitation organisations, nursing homes
- Organisations for the disabled
- Care services and self-help groups
- Visitors from industry and commerce

Main product categories

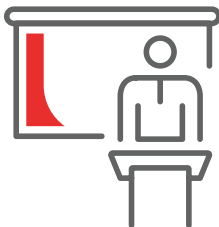
- Accident and emergency equipment
- Building technology and services
- Catering and kitchen equipment
- Communication, IT and connected health
- Dental equipment and supplies
- Diagnostics
- Disinfection and disposal systems
- Electromedical equipment/ medical technology
- Fabrics/laundry
- Laboratory equipment
- Medical furniture and equipment
- Medical consumables
- Ophthalmic supplies
- Pharmaceutical supplies
- Rehabilitation equipment/ orthopaedic supplies
- Services and publication

Statistics 2019

Total exhibitors

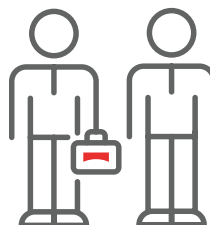
899

Domestic **122**
Foreign **777**
Countries **49**



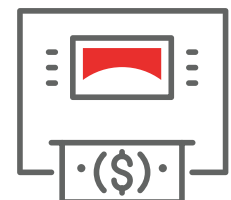
Total visitors

11,525



Total net exhibition area (m²)

7,137



When reading the figures for the different years, please note that all MEDICAlliance events firstly take place in different rotations and secondly have been partially replaced by digital formats due to the COVID-19 pandemic.

Economic data for Thailand

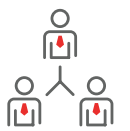
Future prospects for “Medical Technology”

Thailand is relatively well positioned during the corona crisis and there is currently sufficient capacity in intensive care units. At the moment, there is high demand for medical equipment to treat Covid-19 such as infusion pumps and respiration equipment as well as consumables such as medical gloves and disinfectants. The Thai market for medical technology is considered to be the largest in Southeast Asia and analysts forecast that it will grow by 7-9 percent annually in the medium term. Medical technology imports have grown strongly in the last two years and are likely to play an important role in the long term.

Further information: www.thaimed.co.th

Number of inhabitants (million) in 2019

69.6



Proportion of health expenditure to GDP (%) in 2017

6.5



Population increase (% p.a.) in 2018

0.3



Doctors/100,000 inhabitants in 2018

56



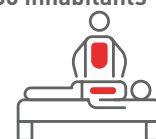
Average life expectancy at birth (years) in 2017

75.4



Hospital beds/100,000 inhabitants in 2018

225



Market data for “Medical Technology”

1,375

Market volume in US\$ millions (2017)

1,157

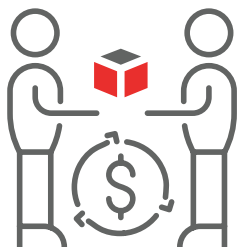
Import in US\$ millions (2017)

Key economic data 2018 to 2020* as per December 2019

Real change in % in comparison with previous year | *2019 and 2020: Forecast

GDP

2020 2.9
2019 2.7
2018 4.1



Gross capital investment

2020 3.0
2019 2.4
2018 3.8



Imports

2020 2.8
2019 -2.2
2018 8.6



Sources: GTAI Branche kompakt: Thailand Gesundheitswesen, 11.03.2020 and Special Coronavirus Thailand, 19.06.2020



MEDICAlliance
www.medicalliance.global

Messe Düsseldorf GmbH
Postfach 10 10 06 _ 40001 Düsseldorf _ Germany
Tel. +49 211 4560-01 _ Fax +49 211 4560-668
www.messe-duesseldorf.de



**Messe
Düsseldorf**