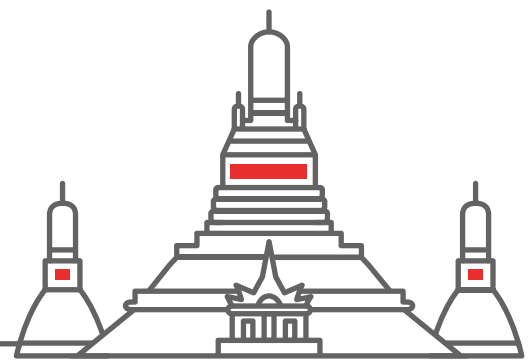




10th International Exhibition on Hospital,  
Diagnostic, Pharmaceutical, Medical &  
Rehabilitation Equipment & Supplies  
**BITEC, BANGKOK, THAILAND**  
**13-15 SEPTEMBER 2023**



www.medicalfair-thailand.com

Member of  **MEDICAlliance**

## General information

**Established**  
2003

**Organiser**  
Messe Düsseldorf Asia Pte. Ltd.

**Venue**  
Bangkok International Trade  
and Exhibition Centre  
Bangkok, Thailand

**Staging cycle**  
Biennial

**Project management**  
Daphne Yeo

**Contact**  
Daphne Yeo  
medicalfair-thailand@mda.com.sg  
Phone: +65 6332 9620  
Christian Bigge  
BiggeC@messe-duesseldorf.de  
Phone: +49 211 4560 573

## Visitor target groups

- Health ministry officials
- Hospital managers and employees
- Doctors (surgeries and hospital)
- Nursing officers
- Hospital technicians
- Biologists, biochemists, technicians
- Dispensing chemists, pharmacists
- Physiotherapists
- Rehabilitation organisations, nursing homes
- Organisations for the disabled
- Care services and self-help groups
- Visitors from industry and commerce

## Main product categories

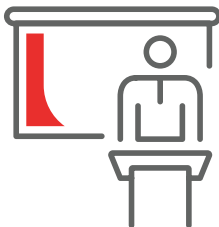
- Accident and emergency equipment
- Building technology and services
- Catering and kitchen equipment
- Communication, IT and connected health
- Dental equipment and supplies
- Diagnostics
- Disinfection and disposal systems
- Electromedical equipment/ medical technology
- Fabrics/laundry
- Laboratory equipment
- Medical furniture and equipment
- Medical consumables
- Ophthalmic supplies
- Pharmaceutical supplies
- Rehabilitation equipment/ orthopaedic supplies
- Services and publication

## Statistics 2019

### Total exhibitors

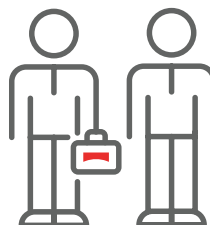
**899**

Domestic **122**  
Foreign **777**  
Countries **49**



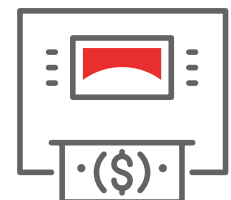
### Total visitors

**11,525**



### Total net exhibition area (m<sup>2</sup>)

**7,137**



When reading the figures for the different years, please note that all MEDICAlliance events firstly take place in different rotations and secondly have been partially replaced by digital formats due to the COVID-19 pandemic.

# Economic data for Thailand

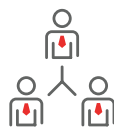
## Future prospects for “Medical Technology”

Thailand is relatively well positioned during the corona crisis and there is currently sufficient capacity in intensive care units. At the moment, there is high demand for medical equipment to treat Covid-19 such as infusion pumps and respiration equipment as well as consumables such as medical gloves and disinfectants. The Thai market for medical technology is considered to be the largest in Southeast Asia and analysts forecast that it will grow by 7-9 percent annually in the medium term. Medical technology imports have grown strongly in the last two years and are likely to play an important role in the long term.

Further information: [www.thaimed.co.th](http://www.thaimed.co.th)

Number of inhabitants (million) in 2021

70



Proportion of health expenditure to GDP (%) in 2019

3.9



Population increase (% p.a.) in 2021

0.2



Doctors/100,000 inhabitants in 2020

55



Average life expectancy at birth (years) in 2019

77



Hospital beds/100,000 inhabitants in 2020

251



## Market data for “Medical Technology”

1,452

Market volume in US\$ millions (2020)

1,126

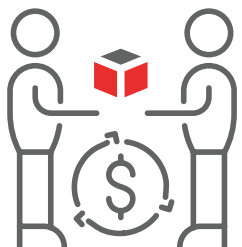
Import in US\$ millions (2020)

## Key economic data 2020 to 2022\* as per January 2021

Real change in % in comparison with previous year | \*2022: Forecast

### GDP

2022 4.5  
2021 2.5  
2020 -6.1



### Gross capital investment

2022 3.6  
2021 6.8  
2020 -4.8



### Imports

2022 5.7  
2021 5.0  
2020 2.8



Sources: GTAI Branche kompakt: Thailand Gesundheitswesen  
gha.Health Zukunftsanalyse Thailand, 2021



**MEDICAlliance**  
[www.medicalliance.global](http://www.medicalliance.global)

Messe Düsseldorf GmbH  
Postfach 10 10 06 \_ 40001 Düsseldorf \_ Germany  
Tel. +49 211 4560-01 \_ Fax +49 211 4560-668  
[www.messe-duesseldorf.de](http://www.messe-duesseldorf.de)



**Messe  
Düsseldorf**