



International Specialized Fair and Congress for Rehabilitation, Care, Physiotherapy, Prosthetics and Orthotics, Mobility, Inclusion World and Living

## EXPOCENTRE FAIRGROUNDS, MOSCOW, RUSSIA

### PARTICIPATION SUSPENDED



[www.rehacare-moscow.ru/en](http://www.rehacare-moscow.ru/en)

Member of  MEDICAlliance

### General information

#### Established

2022  
Successor of INTEGRATION  
MOSCOW (2011–2019)

#### Organiser

000 Messe Düsseldorf Moscow  
Leipziger Messe International  
GmbH

#### Venue

Expocentre Fairgrounds,  
Moscow, Russia

#### Project management

Mikhail Shatov

#### Contact

Mikhail Shatov  
ShatovM@messe-duesseldorf.ru  
Phone: +7 495 955 91 99 ext. 634

#### Staging cycle

Annual

### Visitor target groups

- Manufacturers and suppliers of all kinds of goods and services
- Public organizations of disabled people
- Educational and rehabilitation institutions
- Developers of innovative projects and startups
- Science community
- Non-commercial organizations
- Physiotherapists
- Rehabilitation Physicians
- Orthotists
- Distributors, industrial traders
- Disabled people, patients
- Managers from hospitals, clinics and rehabilitation centers, private and public orthopedic workshops, startups, public agencies, insurers and medical appraisal services
- Media

### Main product categories

- Daily living aids (household, nutrition) and clothing
- Barrier free living
- Aids for children
- Communication
- Medical care
- In-patient hospital care and home care
- Mobility and walking aids
- Technical means and technologies for rehabilitation
- Prosthetics and orthotics
- Orthopedic footwear technology
- Palliative and nursing care
- Physical training, physiotherapy and occupational therapy
- Apprenticeship, workplace and occupation
- Travel, leisure, sports and recreation
- Health resorts and rehabilitation centers
- Associations, organizations, nursing residents, services

## Statistics 2019

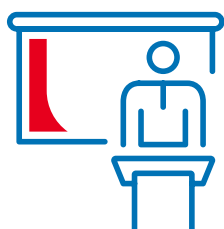
### Total exhibitors

# 116

Domestic 88

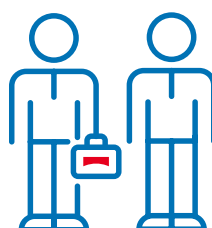
Foreign 28

Countries 9



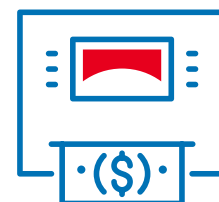
### Total visitors

# 3,090



### Total net exhibition area (m<sup>2</sup>)

# 2,044



When reading the figures for the different years, please note that all MEDICAlliance events firstly take place in different rotations and secondly have been partially replaced by digital formats due to the COVID-19 pandemic.

# Economic data for Russia

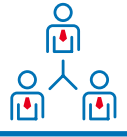
## Future prospects for "Medical Technology"

The virus pandemic is pushing the Russian healthcare system to its limits. The government is responding by building makeshift hospitals in no time at all, increasing funding for bed capacity in existing hospitals and medical technology. Around 412 million euros alone are being spent on expanding the number of beds in hospitals and infection wards, and a further 162 million euros are available to purchase medical technology. The focus here is on respiration equipment, Covid-19 rapid tests and protective suits. The government is temporarily facilitating the import of medical products from abroad to ensure provision for the population.

Further information: [www.medprom.ru](http://www.medprom.ru)

Number of inhabitants (million) in 2019

146.7



Proportion of health expenditure to GDP (%) in 2018

3.2



Population increase (% p.a.) in 2018

-0.1



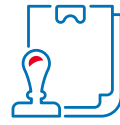
Doctors/100,000 inhabitants in 2019

374



Average life expectancy at birth (years) in 2018

72.6



Hospital beds/100,000 inhabitants in 2019

860



## Market data for "Medical Technology"

4,220

Market volume in US\$ millions (2018)

3,352

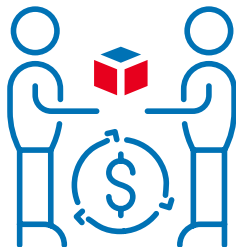
Import in US\$ millions (2018)

## Key economic data 2018 to 2020\* as per December 2019

Real change in % in comparison with previous year | \*2019 and 2020: Forecast

### GDP

2020 2.0  
2019 1.3  
2018 2.3



### Gross capital investment

2020 7.0  
2019 3.1  
2018 4.3



### Export (only goods)

2020 6.2  
2019 3.6  
2018 5.1



Source: GTAI Special Coronavirus Russland, Mai 2020



**MEDICAlliance**  
[www.medicalalliance.global](http://www.medicalalliance.global)

Messe Düsseldorf GmbH  
Postfach 10 10 06 \_ 40001 Düsseldorf \_ Germany  
Tel. +49 211 4560-01 \_ Fax +49 211 4560-668

[www.messe-duesseldorf.de](http://www.messe-duesseldorf.de)



**Messe  
Düsseldorf**